

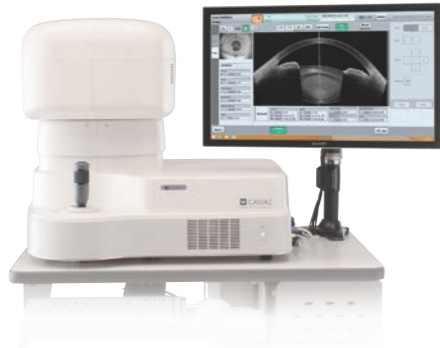


One vision, Two sharp eyes
with Our Innovation

CASIA2

Cornea / Anterior Segment OCT

CASIA2 SPECIFICATIONS



- Advanced Imaging
Deeper, wider and clearer
- Testing application for cataract surgery
- Fulfilling Analysis Function
Trend analysis
Lens shape analysis

[Body]

Resolution	Axial (Depth)	10µm or less (in tissue)
	Transverse	30µm or less (in tissue)
Scan rate		50,000 A scans / second
Scan range	Depth	13mm
	Transverse	Radial Scan: φ16mm Raster Scan: 12mm×12mm
Stroke range of moving section		40mm(Y axis); 88mm(X axis); 45mm(Z axis)
Stroke range of chin rest		70mm
Dimensions and Weight		530(W)×560(D)×455(H)mm Approx. 33kg
Type of light source		Swept source Laser
Wavelength		1,310nm
Output power		Less than 6mW

[Power source]

Voltage	100~240V AC
Frequency	50 / 60Hz
Power consumption	170VA

[External HDD]

Capacity	More than 4TB × 2
----------	-------------------

[Touch panel LCD monitor]

Display	More than 20 inch touch panel LCD monitor
---------	---

[Workstation computer]

OS	Windows®8.1 64bit
CPU	Intel® Core i7 processor or higher
Memory	8GB or more
SSD	128MB or more
External HDD	4TB and over × 2
Data output	Printer (LAN/USB)
Display	20inches or above color LCD monitor

Tomey Corporation [Asia-Pacific]

2-11-33 Noritakeshinmachi
Nishi-ku, Nagoya, 451-0051, Japan
Tel: ++81-52-581-5327
Fax: ++81-52-561-4735
E-mail: intl@tomey.co.jp

Tomey GmbH [Europe]

Wiesbadener Straße 21
90427 Nürnberg, Germany
Tel: ++49-911-9385462-0
Fax: ++49-911-9385462-20
E-mail: info@tomey.de

For more information, visit our web site <http://www.tomey.com>

©2016 Tomey Corporation. Specifications are subject to change without notice. Any products mentioned herein are registered trademarks of their respective owners.

161128

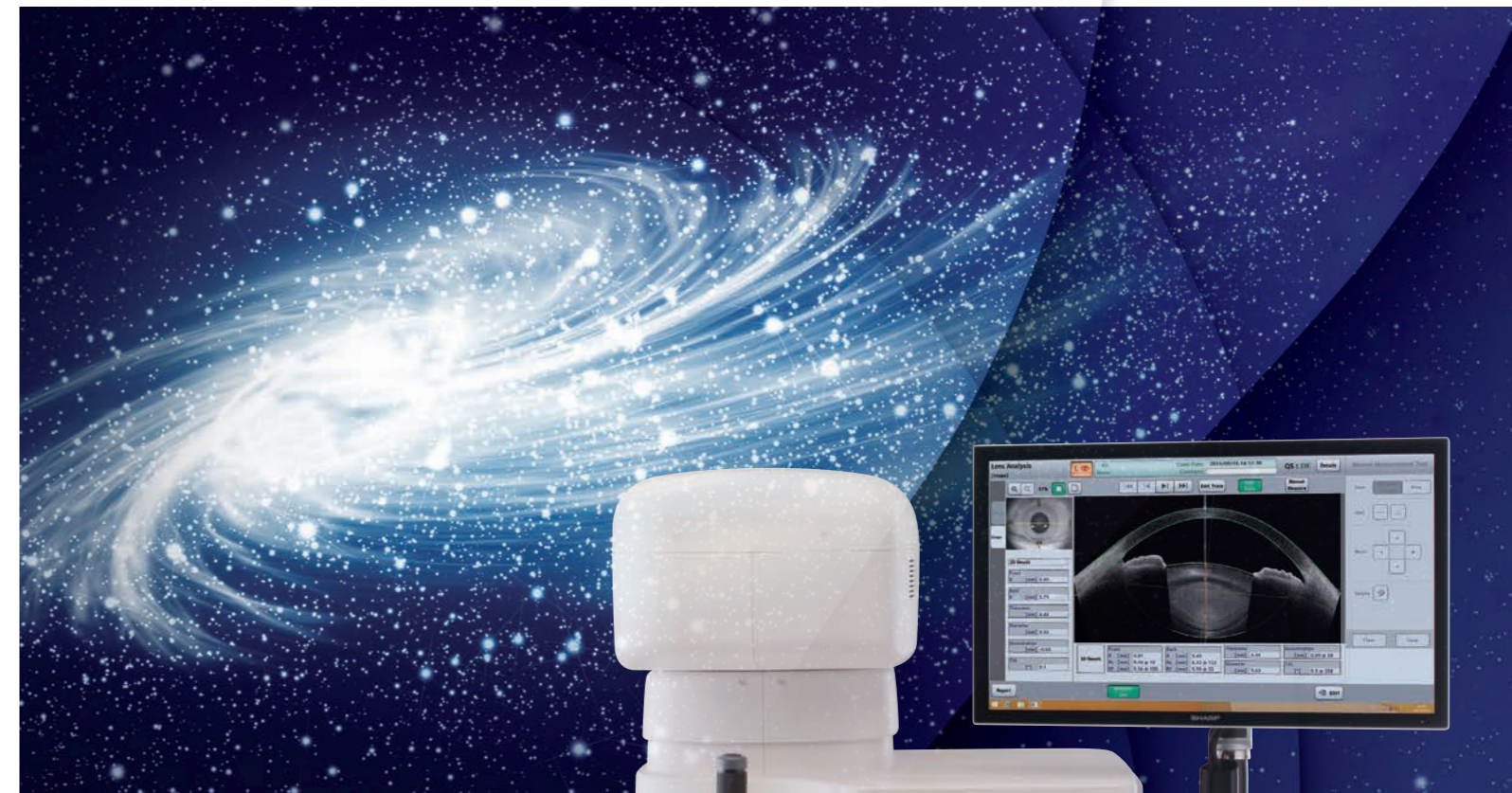


One vision, Two sharp eyes with Our Innovation

CASIA2

Cornea / Anterior Segment OCT

Efficient support of cataract surgery



- Advanced Imaging
Deeper, wider and clearer
- Testing application for cataract surgery
- Fulfilling Analysis Function
Trend analysis
Lens shape analysis



One vision, Two sharp eyes
with Our Innovation

CASIA2

Cornea / Anterior Segment OCT

Efficient support of cataract surgery

The next-generation Cornea / Anterior Segment OCT "CASIA2", will advance cataract surgery

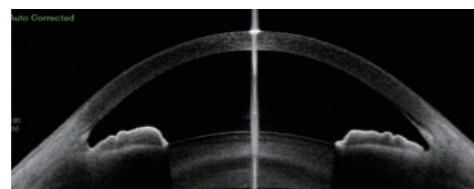


Advanced Imaging

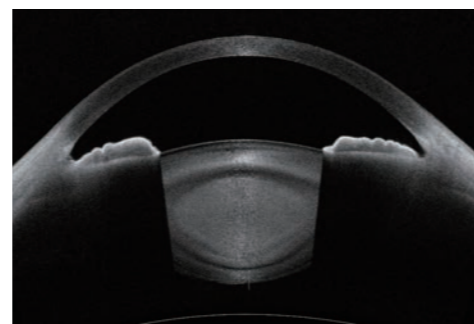
Cornea and lens shown in one image

Deeper Imaging

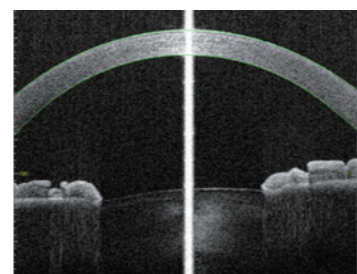
With CASIA2, the light source of coherency functions is improved, and higher sensibility toward depth is realized compared to our former model. By using this new technology, it is possible to measure to a depth of 13mm from anterior cornea to posterior lens with one shot.



SS-1000



CASIA2

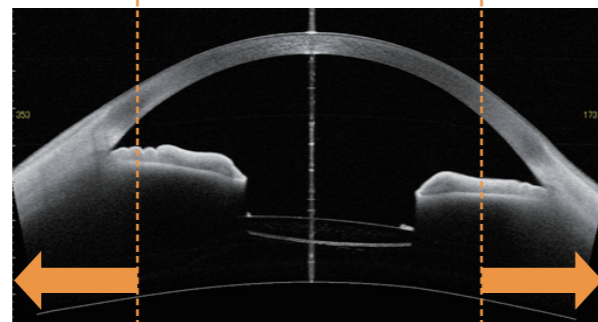
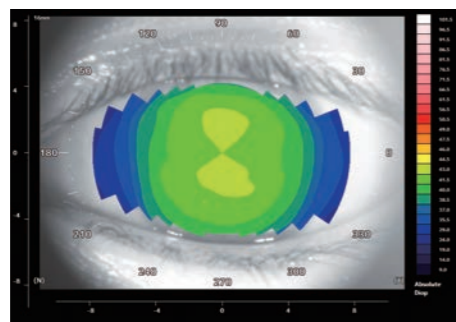


SS-1000

Wider Imaging

Capturing images around the angle is possible in corneal topography mode. As with corneal shape analysis, it is possible to extract and analyze the angle and observe the IOL, which enables testing without switching measuring modes.

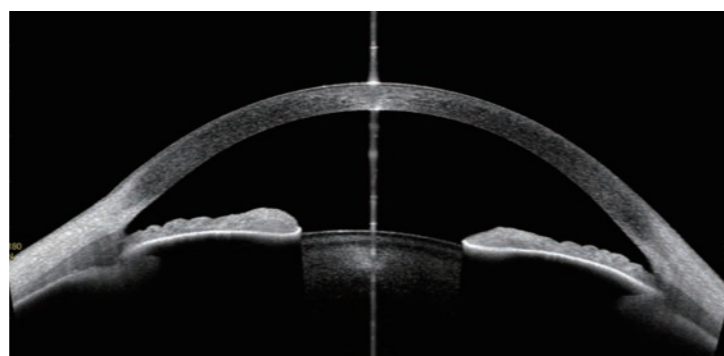
**For lens shape measurement, LensBiometry capture is necessary.*



CASIA2

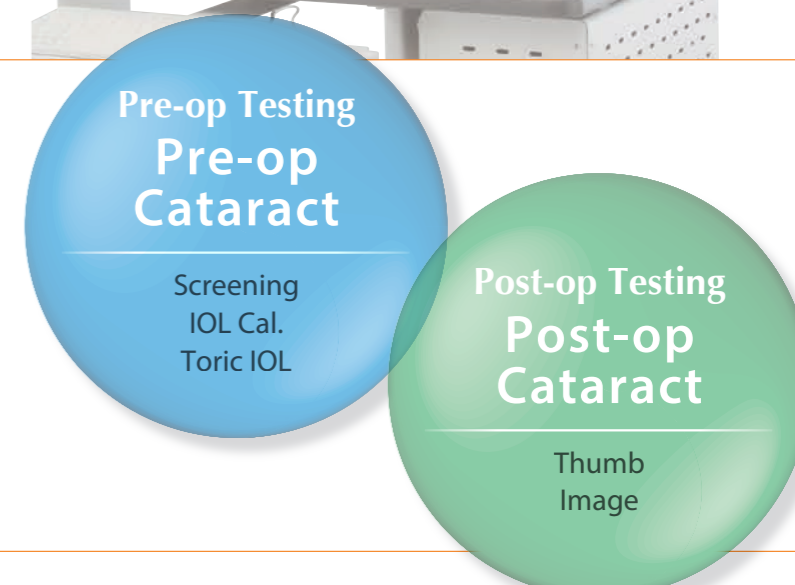
Clearer Imaging

By scanning 16 images simultaneously, clearer images are obtained.



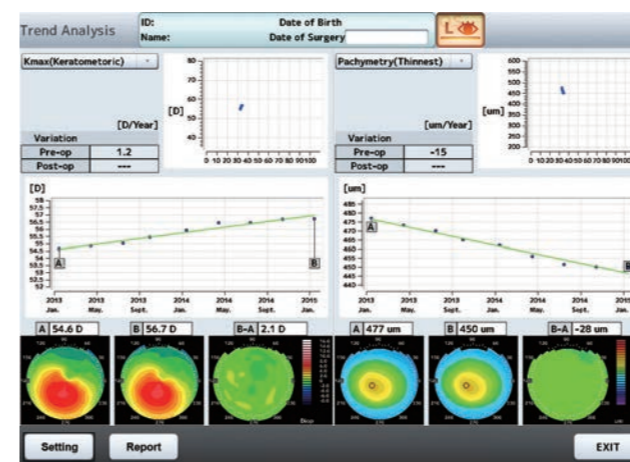
CASIA IOL Cataract Surgery CICS

The testing application for cataract surgery, CICS, is installed in the CASIA2, which effectively supports cataract surgery. There are two types in CICS: "Pre-op testing" and "Post-op testing". To use their functions, capture the image within each testing protocol.



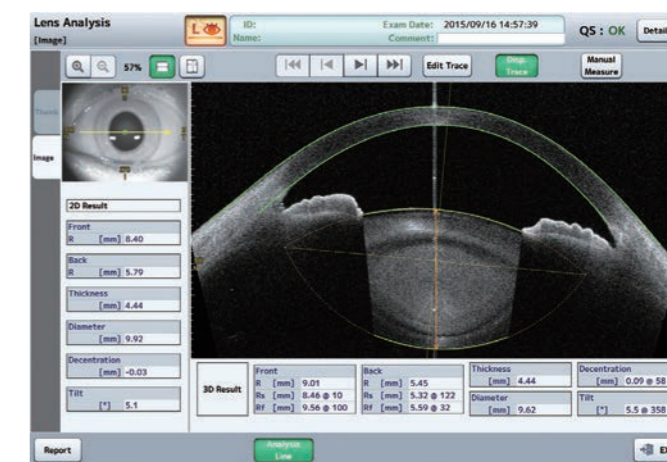
Fulfilling analysis functions

Trend Analysis



The color code map shows parameter changes of each corneal shape. Additionally, the simplicity of the graph means information is instinctively easy to grasp making this analysis useful for observing the keratoconus.

Lens Shape Analysis



While capturing anterior cornea to posterior lens, it is possible to measure corneal curvature, thickness and tilt of the anterior / posterior lens.